



Spa Day, Every Day This Westport property offers a pool, terrace and pavilion, along with a nearly new 9,500-square-foot home. It lists for \$11,995,000 with Michelle & Company in Westport. 203-454-4663.

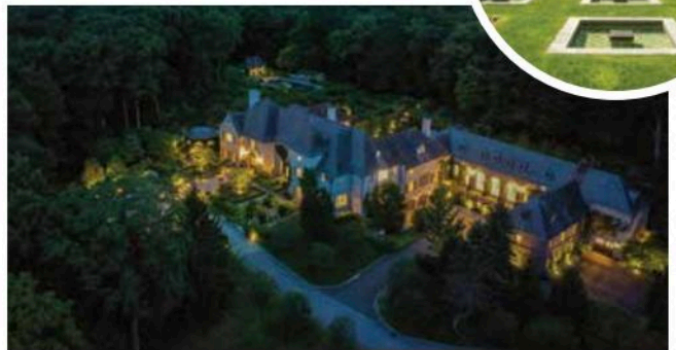
the pool terrace, which she also designed. Below that, the lawns roll all the way down to the water's edge, where a private dock can be built. It was Agnes' husband, Cameron Clark, who designed the French-style manor home, while architect Jack Franzen gets credit for its renovated spaces, now measuring nearly 6,000 square feet. It's offered for \$6.5 million by Andrew Whiteley of Al Filippone Associates.

Beachside Avenue is one Westport's most desirable addresses, lined with private, Sound-side estates, many with sandy beaches to call their own. Number 66 Beachside epitomizes the Gold Coast aesthetic with its nearly new (circa-2019), 9,500-square-foot manse. The two-acre grounds feature an expansive pool terrace and fully stocked pavilion with an outdoor kitchen, pizza oven, fireplace, large-screen TV and lounging and dining spaces, as well as a full bathroom and outdoor shower. There's also a private path that gives access to 300 feet of sandy beachfront. And the interiors are a staycation waiting to happen with next-level fun on the lofty third floor, currently equipped with fitness equipment and a ping-pong table, along with a wet bar and a deck with a hot tub. There's

also a 1,500-bottle wine cellar and a spa-like main bedroom with a glass-enclosed tub and shower room and free-standing slipper tub. Michelle & Company lists the property for \$11,995,000.

GREAT GARDENS

A \$30-MILLION GREENWICH ESTATE OFFERS 14 ACRES OF thoughtful landscaping created by British designer Simon Johnson. The outdoor spaces start with an elaborate front courtyard, featuring maze-like hedges fronting the grand entryway. In back, there's another gardened terrace, leading to multiple formal "rooms," allées of ornamental trees, stone paths, water features and a pool and pool house. The main house, with interiors designed by Steven Gambrel, is equally impressive with amenities that include a grand reception hall, a wood-paneled library, a home office, a gym, a billiards room, a wine cellar and a screening room, with plush, tiered seating—and there's even an orangerie and an indoor pool with floor-to-ceiling windows. Leslie McElwreath of Sotheby's International Realty has the listing.



Wow Factor Extensive gardens grace this 14-acre Greenwich estate, offered for \$30 million by Leslie McElwreath of Sotheby's International Realty in Greenwich. 917-539-3654.



A IS FOR AWESOME

Modernist architect Vincent Amore built this gorgeous Guilford abode in 1971 for himself and his family. A true "tiny home," the A-frame measures just 1,100 square feet. But it's built on a quarter-acre promontory on the water's edge, with unbroken views of Long Island Sound—from the wraparound deck and nearly every room in the house. Inside, the open-plan main floor centers on a wall of windows and a double-height stone fireplace. There's also a circular staircase that gives access to the lofty bedroom suite. It lists for \$1.5 million with Carol Mancini and Ron Mazzacane of William Pitt Sotheby's International Realty in Guilford. 203-710-6405 and 203-494-1111.

MIDDLE: STEVE ROSSI FOR SOTHEBY'S INTERNATIONAL REALTY; BOTTOM: DENNIS CARBO