

REAL ESTATE

HOT PROPERTY

Move-in ready stately custom colonial in New Milford

By Pamela Brown

If you're looking for a home that has it all, this is the place for you.

"This custom built colonial, sited on a cul-de-sac enclave of similar homes in southern New Milford, has more than you could ever ask for," said Patty McManus, Realtor with William Pitt Sotheby's International Realty's Northern Fairfield County Brokerage. "The home has been well-maintained and is move-in ready."

Built in 2001, the 2,762-plus-square-foot, three level, nine-room home, including a finished lower level, is located on 1.15 acres at 29 Boxwood Lane, a cul-de-sac neighborhood conveniently located in the Southernmost portion of New Milford. This location is very desirable due to its ease in accessing Route 7/ Interstate 84 and all kinds of dining, shopping and entertainment venues.

As you step inside the home, you will appreciate its warm, inviting atmosphere.

"The home is just beautiful from start to finish, beginning with a foyer with oak hardwood floors that's open and welcoming," McManus said. An open floor plan creates a large space for all kinds of get-togethers.

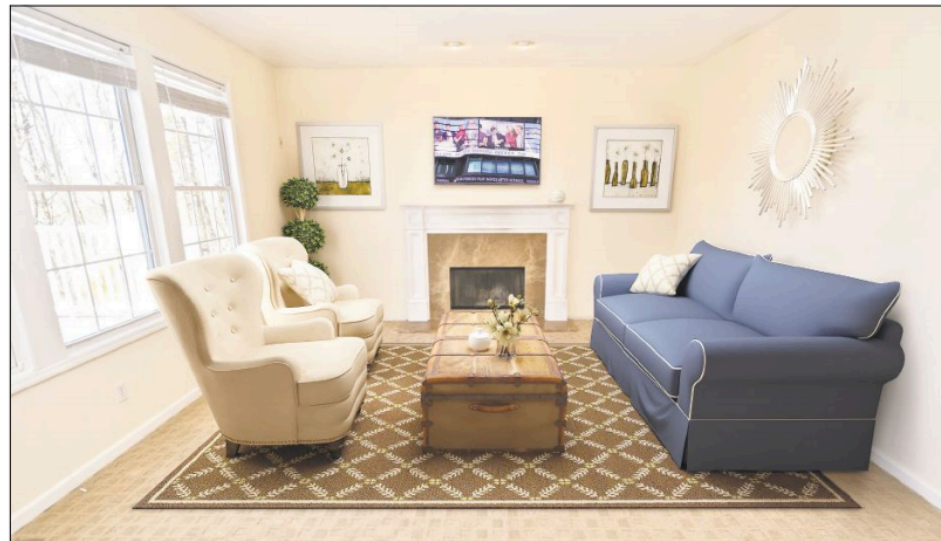
A formal living room and dining room also features warm oak hardwood floors.

"The living room/dining room is one large, open space, with columns delineating the spaces. The living room is light and bright with many windows," she said.

Pendant lighting above the dining table defines the dining area.

"It's a wonderful area for entertaining as it flows in to the kitchen, family room and out to the deck," she said.

Cooking is so convenient and enjoyable in the bright, spacious kitchen. This room is detailed with granite countertops, a center island with seating, white cabinetry, white trim, recessed and pendant lighting and hardwood



William Pitt Sotheby's International Realty

Above: The formal living room features a fireplace and warm oak hardwood floors. Below: The 2,762-plus-square-foot home is on 1.15 acres at 29 Boxwood Lane, a cul-de-sac neighborhood in New Milford.

floors. Stainless steel appliances include a double wall oven, a refrigerator, a dishwasher and a cooktop. A casual breakfast nook is highlighted by a ceiling fan and is sited near glass sliders that open to a spectacular wood deck.

"It has amazing views and sunsets," McManus said. "It is simply a fantastic space for entertaining."

The kitchen effortlessly flows into a comfortable family room. This large space features a wood-burning fireplace framed in marble and decorative colonial-style molding, a neutral color palette with white trim, recessed lighting and carpeting. Numerous windows bring in an abundance of sunlight.

A laundry room with cabinetry and a powder room with a neutral palette and a pedestal sink complete the main level.

An elegant oak staircase leads to the upper level and a calming master bedroom suite.

"It's a lovely space with large windows and tons of natural light," McManus said. This generously-sized room has a soft gray color palette complemented



by white trim, his-and-hers walk-in closets, a ceiling fan and wall-to-wall carpeting. A full private master bathroom features neutral, earth-tone tile, a glass-enclosed stall shower, a soaking Jacuzzi tub surrounded by three windows and his-and-hers pedestal sinks.

Three additional generously-sized bedrooms with wall-to-wall carpeting, ceiling fans, windows and ample closet space are also located on the upper level. An additional hall bathroom services

these bedrooms. The bathroom is a vision in white featuring a double vanity with white Corian countertops, white cabinetry, a shower/bathtub and a tile floor.

A finished lower level/recreation room offers a wealth of additional living and entertaining space. It is well-appointed with a wonderful wall of wood built-in cabinetry and shelving that provide an abundance of storage, windows, white trim, wall-to-wall carpeting and recessed lighting.

Details

29 Boxwood Lane in New Milford is listed for \$474,000. An open house will take place from noon to 2 p.m. today.

"It's ideal for an additional office space, play room, game room or anything else that one desires," she said. Glass sliders offer access to a slate patio area and the backyard.

Additional amenities include central air conditioning, hot air zoned heat, an attic with pull-down stairs and a two-car attached garage. Also, the entire house is pre-wired for a security system.

The property is landscaped with a variety of mature trees and shrubs and a rear stone wall. A magnificent wood deck spans the whole rear of the home.

"The deck is absolutely amazing," said McManus, noting it has recessed lighting, ceiling fans and views that go on forever. A large backyard with a playset included offers plenty of space for recreation and outdoor entertaining.

"This home has something for everyone! The location is fantastic for starters. It's ideally located for commuters, plus it's close to shopping and restaurants," McManus said. "The kitchen has plenty of counter space for food preparation and lots of space for a large table. The family room and fireplace are nearby so you can enjoy a cozy fire on a cool night while having dinner. And the finished, walk out lower level is a huge bonus. There's nothing to want for in this home ... What are you waiting for?"

An open house will take place from noon to 2 p.m. today.

The home is offered at \$474,000. To view the virtual tour, visit www.WilliamPitt.com; MLS# 170065283.

Listing agent: *Patty McManus, William Pitt Sotheby's International Realty's Northern Fairfield County Brokerage, 112 Federal Road, (203) 796-7700, or PMcManus@wpsir.com.*