

REAL ESTATE

HOT PROPERTY

Country, luxury unite in this graceful Danbury colonial

By Pamela Brown

Uncover a beautiful life in this colonial detailed with classic elements.

"This spectacular home has the 'wow' factor that many buyers are searching for. Besides being immaculate and ready to move in, it's immersed in a blend of casual elegance," said Lorraine Amaral, Realtor with William Pitt Sotheby's International Realty's Northern Fairfield County Brokerage

The 3,436-square-foot home is located on 1.10 acres at 16 Josh Lane in Danbury.

"The home is located in a luxury-styled community, set back on a serene level lot, in the King Street area of Danbury on a quiet cul-de-sac street," Amaral said.

A stunning double-story foyer, with a high-styled amber and bronze chandelier, sets the tone for the home's endless classic detailing.

"Upon entering you're impressed with the beige and taupe inlaid tile floor with a double mosaic pattern in natural shades." Other special features include a vaulted ceiling, crown moldings and hardwood floors. "The beautiful solid oak wood staircase is contrasted with white spindles and a high-quality black feathered runner with a mosaic border to create a distinctive look," Amaral said.

Directly off the foyer is a French door that opens to a stylish office featuring hardwood floors and white molding. The hub of the home is a spacious Kingswood gourmet eat-in kitchen.

"It's striking and stunning with its contrast of rich burgundy cherry cabinetry and the light creme mocha granite counters with a beveled edge," Amaral said.

The kitchen has a center granite island with a round vegetable stainless sink, burgundy cherry custom cabinetry, mocha crème granite countertops, a pantry and recessed lighting. Appliances include a professional DCS stainless steel five burner gas stove with oven, a GE wall oven and built-in microwave, a Jenn-Air refrigerator and a Bosch dishwasher.

A dining area offers plenty of space for casual dining. Also, the



Photos by William Pitt Sotheby's International Realty's Northern Fairfield County Brokerage

Above: The 3,436-square-foot stylish colonial at 16 Josh Lane in Danbury is located on 1.10 acres. Below: The formal elegant dining room has a light wheat color palette and newly refinished hardwood floors.

kitchen has a small desk area with shelving and a wine holder. Glass sliders open to a rear deck overlooking a level backyard.

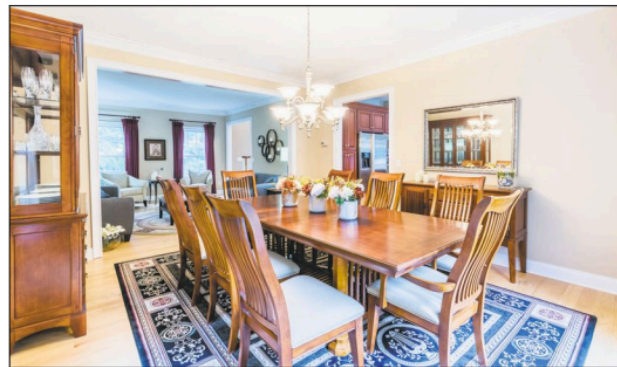
"The kitchen has an easy flow into the formal elegant dining room and spacious living room that creates a perfect gathering place for entertaining guests, especially for large holiday dinners," said Amaral.

A light wheat color palette unites both rooms, offering a warm symmetry. Both the dining room and living room are sophisticated spaces with newly refinished hardwood floors and bright white crown molding. Windows in both rooms let in an abundance of natural light while offering attractive views of the property.

A brick, gas log fireplace keeps the generously-sized family room cozy on chilly days. This casual space has an angled, vaulted ceiling, recessed lighting, a soft sage palette, wall-to-wall carpeting and classic white trim. Large windows provide views of the backyard.

A half bathroom with a pedestal sink and a laundry room with a tiled floor complete the main level. A traditional wood staircase leads to the upper level. A set of six panel double doors open to a fabulous en-suite master bedroom.

"This room envelops you in a



warm personal space, perfect for relaxation," Amaral said.

The bedroom is detailed with a deep-set tray ceiling, double-wide custom molding, lush wall-to-wall carpeting, sizable double walk-in closets and recessed lighting. The tranquil ambiance of the master bedroom extends to the master bathroom.

"This room presents the life of luxury with an oval soaking tub below a sun-drenched window, a glass-enclosed full stand up glazed porcelain shower with a timeless elegance of antique styled Tuscan stone enhanced by slightly chiseled edges, dual sinks with round mirrors, decorative updated lighting

and custom pleated shades. It's a wonderful place to relax after a full day," she said.

Three additional generously-sized bedrooms are located on the upper level. All have wall-to-wall carpeting, recessed lighting, windows, deep ample closets and six panel white doors. The bedrooms are serviced by a full bathroom with a single onyx granite counter, a porcelain tiled bath with travertine stone and a European-hinged oak cabinet.

"These soft natural hues help keep this bath gender-friendly," Amaral said.

In addition, the home has a large, unfinished, walk-out base-

ment with a 9-foot ceiling, full-sized windows, a concrete floor and storage. French doors open to the backyard and a small patio.

Additional amenities include central air conditioning, a hard-wired security system, central vacuum, efficient hot air oil heat, extra insulation, upgraded tilt-in Thermopane windows, custom pleated shades and an attic with pull-down stairs. A bonus is its three-car heated attached garage with poly resin macro chip acrylic floor, brushed aluminum cabinets and butcher block counter.

"Marilite finished garage walls with slot organization system are perfect for sports enthusiasts, bikes, etc.," Amaral said.

The property is professionally landscaped. Flawlessly detailed, some of its flora includes mature shrubs and trees, like evergreens, red Chinese maple trees, holly bushes, flowering hydrangea and decorative pines.

"Natural stone walls and a sprawling, lush green lawn is surrounded by high dense trees for maximum privacy in this desirable neighborhood," she said. In addition, the secluded backyard has a large, updated composite, maintenance-free deck for outdoor enjoyment.

The colonial is ideally sited in a quiet neighborhood, yet close to the city.

"It has simple, quick access to major highways for an easy N.Y. commute or down county, plus it's close to schools, shopping and fine dining," Amaral said.

As soon as you see this colonial, you'll be awed by its overall richness.

"Buyers will truly adore the ease of an open floor plan with a blend of casual and comfort while still enjoying a luxury lifestyle."

An open house will be held from 1 p.m. to 3 p.m. today. The home is offered at \$599,000. To view the virtual tour, visit www.WilliamPitt.com; MLS#170007129.

Listing agent: Lorraine Amaral, William Pitt Sotheby's International Realty's Northern Fairfield County Brokerage, (203) 796-7700, LAmaral@wpsir.com.