

REAL ESTATE

WHAT YOU CAN BUY

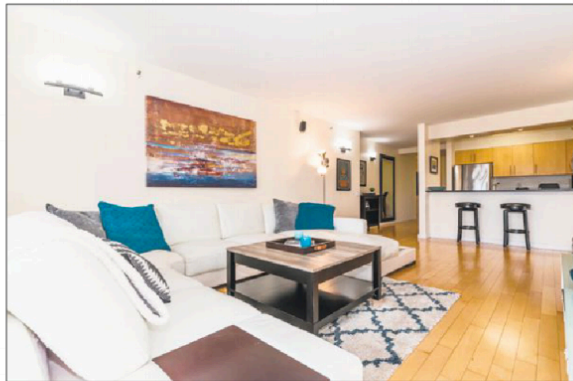
The Advocate and SM Services, a content provider, search the area to find what buyers can get for their money. This week, What You Can Buy features homes in the \$415,000 to \$649,000 range.

Ranch-style condominium/\$415,000

25 Forest St., Unit 7A, Stamford

Beds: 2 Bath: 2 Square Feet: 1,342

This move-in ready condo in the heart of Stamford is pet-friendly, has a roof top deck, a pool, a gym, a clubroom and a 24/7 concierge. This seventh floor unit is part of a 27-year-old, 144-unit building. The interior of the condo has been completely upgraded with stone countertops, stainless steel appliances and wood flooring. The kitchen is an open concept with top-grade appliances, maple cabinets and granite counters. It is completely open to the living area, which has a wall of sliders out to the balcony with views of downtown Stamford. Because of its corner location, the master bedroom has panoramic southeastern views of the city. The master also has its own walk-in closet, an additional linen closet and a luxury bath. There is also a dog park that is accessible from the fourth floor. Heat, hot water, gas and sewer are included. It is served by K.T. Murphy Elementary, Turn of River Middle and Stamford High School.



William Pitt Sotheby's International Realty

Listing agent: Barbara Hickey, William Pitt Sotheby's International Realty, (203) 912-0578, bhickey@williampitt.com.

Contemporary colonial/\$649,000

4 Quarry Way, Wilton

Beds: 3 Bath: 2½ Square Feet: 3,160

This 27-year-old single-family colonial offers a master bedroom on the main floor and an open floor plan with a unique sun-filled foyer that unfolds to a separate dining room and library. The gourmet eat-in kitchen with a breakfast area is adjacent to the screened porch and grand deck overlooking eye-catching perennials. It also comes complete with a dynamic great room with a soaring ceiling, clean aesthetics and a fireplace. The master has two walk-in closets plus laundry and the two extra bedrooms are well apportioned with vaulted ceilings. The home is on about 1-acre in the Turtlehead Estates neighborhood. It is located on a cul-de-sac, is low maintenance and only a few minutes to the center of town. There is also a two-car over-sized garage and there is entry into the home from all doorways. There is also a newly painted exterior and new roof. It is served by Miller-Driscoll Elementary, Cider Mill Middle and Wilton High School.



Blackstone Properties of Connecticut

Listing agent: Annmarie Del Franco, Blackstone Properties of Connecticut, (203) 240-5877, annmarie@BlackstoneCT.com.