

## REAL ESTATE

## HOT PROPERTY

## Sleek mid-century modern offers elegance in Weston

By Jennifer Bonnett

This Edward Durell Stone-designed property in Weston exudes period grace.

Stone was one of the most well-known architects of his era, referred by the Associated Press in the early 60s as the most frequently quoted architect since Frank Lloyd Wright (who was also one of his greatest influences), according to Andrew Wood of William Pitt Sotheby's International Realty.

His major commissions included the JFK Center for the Performing Arts, National Geographic Society Headquarters and the New York Gallery of Modern Art.

The particular mid-century modern residence was built in 1948 as Stone's star was on the rise, during the period when he served as chief design critic and associate professor of architecture at Yale, Wood said.

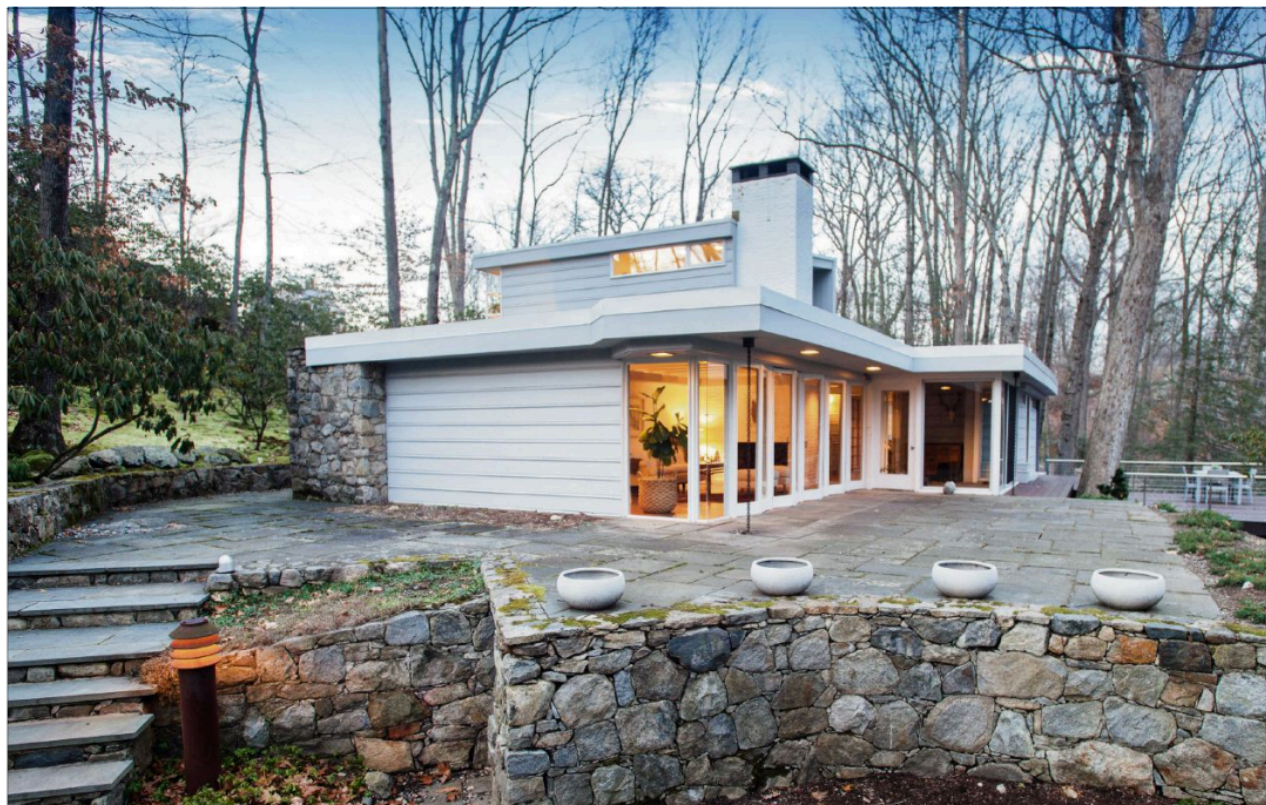
The home features glass walls with views in every direction, a glass foyer, a Gaggenau kitchen and beautiful uplighting to set the mood whether entertaining or relaxing.

This glass-walled gem takes in its magical setting from every vantage point. Enter through the foyer and immediately feel the warmth from either its sun-filled rooms or radiant heat floors.

From there, the sleek kitchen with cathedral ceiling flows outside to a deck overlooking the lake, as well as to the dining and living rooms with fireplace. Enjoy three modern baths. There are also three bedrooms and a main-level laundry room among the home's 1,747 square feet.

Perfectly sited on a gorgeous moss-covered hillside, the home also boasts views over Laurel Lake. Enjoy privacy on pretty Lords Highway, on two acres on a quiet cul de sac of beautiful homes near Weston Center.

Modern upgrades include a whole house generator. This home stands out perfect for a distinctive main residence or Zen weekend retreat, listing agent Cyd Hamer said.



Photos by William Pitt Sotheby's International Realty

**Above:** This Edward Durell Stone-designed property at 94 Lords Highway in Weston offers outdoor views from any vantage point, thanks to its walls of windows. **Below:** The Gaggenau kitchen includes a center island, pantry and steel backsplash.

## Details

**Address:** 94 Lords Highway, Weston

**Price:** \$799,999

**Features:** This Edward Durell Stone-designed property offers outdoor views from any vantage point, thanks to its walls of windows. It is close to Weston Center and is on a 2-acre property on a moss-covered hillside.

**Schools:** Hurlbutt Elementary, Weston Middle, Weston High

**Listing agents:** Cyd Hamer, William Pitt Sotheby's International Realty, (917) 744 5089 (cell); Ingrid Stringfellow, William Pitt Sotheby's International Realty, (203) 321-9361.

