

**FIND YOUR NEXT CAR!**  
 Check out  
 The ALL NEW  
**INGEARCT.COM** 

**78° F** New Canaan, CT  
 Scattered Clouds  
[Weather](#) | [Contact Us](#)

# New Canaan News

Tuesday, July 21, 2015

SEARCH

newcanaannewsonline.com Businesses

[Register](#) [Sign In](#)

[Home](#) [News](#) [Sports](#) [Police Reports](#) [Community](#) [Real Estate](#) [Opinion](#) [Obituaries](#) [Comics](#) [Jobs](#) [Homes](#) [Rentals](#) [Cars](#) [Index](#) ▼

## Skyview Lane colonial on market for \$4.6M

By Makayla Silva

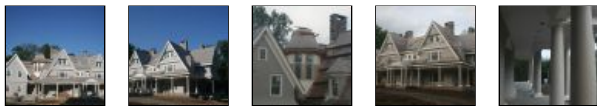
Updated 1:04 pm, Monday, July 20, 2015

1 of 5

◀ PREV NEXT ▶



The exterior of 114 Skyview Lane Photo: Courtesy Of William Pitt Sotheby's



### Most Read

1. Controlled substance arrest
2. Skyview Lane colonial on market for \$4.6M
3. 50th annual Village Fair & Sidewalk Sale draws thousands
4. Police blotter
5. New Canaan's Miller named Hearst Connecticut Girls Lacrosse MVP
6. Police blotter: Stolen vehicle recovered
7. Trading chemo for carrot juice, New Canaanite Doris Sokosh triumphed over cancer

**Ateway**  
 PRESENTED BY  
 Go RVing

▶ WATCH THIS ADVENTURE

**LIBERTY UNIVERSITY**

STUDY ONLINE  
 SO YOU CAN  
 SPEND TIME  
 WITH HER.

LEARN MORE ▶

From the hand-cut stone foundation to its four-story spiral staircase, the transitional-style colonial at 114 Skyview Lane offers 7,200 square feet of premier new construction.

Designed by [Mose Associates Architects](#) and built by [Fletcher Development](#), the westside property features 10-foot ceilings throughout with layers of millwork and an easy floor plan.

Built with high quality green construction, the home features a high efficiency gas HVAC system, a home automated electrical system and

0 0 0 0

Tweet Share  +1

 Larger  Smaller  Email This

 Printable Version  Font

**More Information****About this house**

Type: Colonial

Address: 114 Skyview Lane

Price: \$ 4,595,000

Acreage: 2.04

Year built: 2015

Number of rooms: 14

Bedrooms: 6

Full bath: 6

Half bath: 1

Notable features: Three-car attached heated garage, mudroom, library, four-story spiral staircase, two covered porches, pool site, six bedrooms, six full bathrooms, one half bathroom

Schools: West Elementary, Sax Middle School, New Canaan High School

Assessment: N/A

Taxes: N/A

additional radiant heat designed to offer complete energy efficiency with virtually no maintenance.

Inside, a two-story foyer features floor-to-ceiling wood paneling and wide plank custom-stained floors.

With cathedral ceilings, ornamental beams and detailed millwork, the custom property is a classic example of a “transitional-style Colonial” that so many buyers are seeking.

“I create houses that are different,” said [Ryan Fletcher](#), owner of Fletcher Development LLC. “The layout is different and much less formal than traditional homes.”

With traditional center hall layout, a living room sits right of the entry, featuring a wood-burning fireplace with access on either side into the kitchen and family room.

An easy open family room features a floor-to-ceiling hand-cut stone fireplace pre-wired for a TV hookup.

French doors with transom windows offering added light open to a wraparound deck the leads to a covered flagstone terrace perfect for outdoor entertaining.

A two-story kitchen features exposed beams made from reclaimed barn wood and interior windows that look down from a second-floor hallway.

Just off the kitchen are a formal dining room with a fully equipped butler’s pantry, a walk-in food pantry and an extensive mudroom with its own separate covered entry and access to a heated three-car garage.

A first-floor library features a coffered ceiling and wall-to-wall paneling and includes a full bath to easily convert to guest bedroom if needed.

The second floor features four guest bedrooms in addition to a luxurious and private master suite.

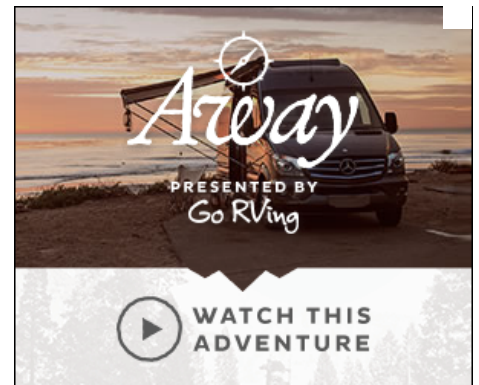
With tray ceilings, the master suite includes a sitting room, his and hers walk-in closets and a stunning master bath with a freestanding soaking tub, his and hers vanities and a full step-in shower.

A third level offers additional space for a playroom or family room and a sixth bedroom while an unfinished lower level offers potential for the buyers to weigh in on design.

The lower level will walk out to a lower stone terrace and two flat acres of property with an optional pool site available for an additional cost.

“We leave the lower level unfinished for the new homeowners to personalize,” Fletcher said. “We’ve done an indoor sports court, yoga studio and a custom train room on that lower level.”

*For more information or to see the property, contact [Robbie Blosio](#), of [William Pitt Sotheby’s](#), at 203-249-6123 or email [rblosio@wpsir.com](mailto:rblosio@wpsir.com)*



 Printable Version  Email This Share  0 Tweet  0  +1  0 0

**Comments**