

*Dreaming of a new home?*  
**Let our mortgage experts help make it a reality!**  
*Click here to apply today!*



Fairfield County Bank  
 877.431.7431 • www.fairfieldcountybank.com



# WILTON'S HAMLETHUB

Your Town. Your Message. Our Mission.

- LIFE
  - NEIGHBORS
  - EVENTS
  - PLACES
  - POLITICS
  - CHARITIES
  - PUBLIC SAFETY
- ABOUT US

## Subscribe

Email address

Subscribe

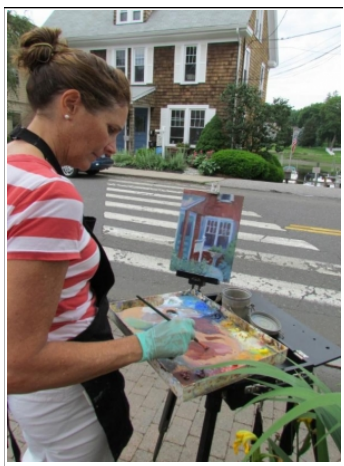
Follow Wilton HamletHub



## Join us in June for Two Plein Air Events: Quick Draw & Paint Rowayton

Like Share 1 Share 8+1 0 Tweet 1

Published on Tuesday, 09 June 2015 11:48  
 Written by Rowayton Arts Center



PREV 1 of 2 NEXT

### ELEBRATING PAINTING EN PLEIN AIR

#### Quick Draw (June 13)

Paint Rowayton (painting: June 5-12; exhibition: June 13-28)

Plein air paintings of scenes in Rowayton are the focus of two special events organized by the Rowayton Arts Center. Paintings that were completed during a two-hour "Quick Draw" on Saturday, June 13th, will be displayed and sold from 12-2 pm in Pinkney Park, 125 Rowayton Avenue.

Also on display that day will be art created by Rowayton Elementary School students.

"Paint Rowayton" artwork, which must be completed between June 5th and 12th, will be featured in a special show that continues through June 28th in the Portside Gallery at RAC 145 Rowayton Avenue.

The winning adult artists for "Paint Rowayton" and "Quick Draw" will receive cash awards and young artists will receive prizes provided by Brendan's 101 and Jerry's Artarama. The judge will be artist/instructor Shauna Shane from the Glastonbury Art Guild.

"Paint Rowayton" and "Quick Draw" are sponsored by Fairfield County Bank with additional support from William Pitt Sotheby's Rowayton and a donation in memory of Jack Munson Burton.

"Plein air painting alters the way artists see things. I am fascinated by the patterns created by light and always seeking the perfect balance of light and color," says instructor Carol Maguire.

Although the concept of painting outdoors is familiar today, in the mid-1800s, it was revolutionary when artists first left their studios to investigate and capture the effects of sunlight and different times of days on a subject.



### Tweets

**Wilton HamletHub**  
 @hh\_wilton  
 .@HairCouture3 highlights, glaze & cut in June bit.ly/1S1UuXy  
[pic.twitter.com/e5jVtFJ01](http://pic.twitter.com/e5jVtFJ01)



Tweet to @hh\_wilton

### Find us on Facebook

**HamletHub Wilton**  
 Like

798 people like HamletHub Wilton.



Facebook social plugin

## FCBuzz - Arts & Enterta in Fairfield

Two important inventions released artists from their studios and allowed them to paint outdoors. Before paint tubes became available, artists ground pigment powders and mixed them with oils to make their own paints, a difficult task away from the studio. Box easels that included foldup legs and a compartment for art supplies made it easy for painters to carry everything they needed to outdoor locations.

Gallery hours at the Rowayton Arts Center are 12-5 pm Tuesday through Saturday and 1-4 pm on Sunday (closed Monday). For information, call 203-866-2744 or visit the [RAC website](#).

For more than 50 years, RAC has sought to create an environment where local and regional artists of all ages and levels of expertise can gather for the purpose of education, exhibition and inspiration. Through its classes, gallery, outreach programs and events, the Arts Center endeavors to promote creativity in the arts and to expand its involvement within the community

Next article



Alex Beyer on Piano, Summer Soiree... >



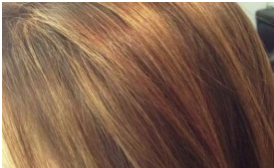
Add a comment...

Also post on Facebook

Posting as **Andrew Wood**

Facebook social plugin

### MORE STORIES



Triple Crown for \$110 at Hair...



JoyRide Cycling Studio to Host...



CT DEEP - Connecticut Hydrogen and...



Wilton Library Ladies Luncheon...

### Town of Westport

Fcbuzz's HamleHub Jun 08 2015 | 12



Town of Westport is an active and valued member of the Cultural of Fairfield County. The population estimated at 26,615 in 2005. We are one of the most affluent communities in the United States and is home to the Westport Country Playhouse, a regional theater, the Levitt Pavilion providing free...

REA

### CT Bites - Your Guide to Gr

#### LisaMarie's Food Truck: Paradise Found Off The Beaten Path in CT

CT Bites Jun 09 2015 | 7:10 am



Lisamarie Ault was flying high. For years she had served as the personal chef to Edgar Bronfman, Sr., the billionaire magnate of the Seagram's empire preparing the best of everything who demanded world-class excellence. That's exactly what he got from a chef who was trained...

RE

ADVERTISE HERE    CONTACT US    TERMS OF SERVICE  
Copyright ©2014 HamleHub™, LLC. All Rights Reserved.