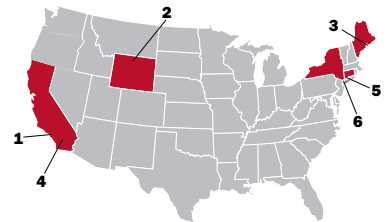


**This week:** Homes with cinematic history

**1** ◀ **Hollywood, Calif.** Silent-film star Clyde Cook owned this four-bedroom house in the Whitley Heights neighborhood. Built in 1923, the Mediterranean-style home includes beamed ceilings, original tiles, ornate ironwork, and a deck off the master suite. A courtyard in the rear has two palms, fruit trees, and bougainvillea. \$1,175,000. Barry Gray, Deasy/Penner and Partners, (323) 822-3200



**2** ◀ **Greybull, Wyo.** Wilford Brimley, a rodeo rider turned actor with roles in *Cocoon* and *The Firm*, owns this 317-acre ranch. The property includes two houses, a blacksmith's cabin, a rodeo arena, and a section of Shell Creek. The ranch is adjacent to government property, which allows for the use of an additional 17,000 acres. \$1,150,000. Randy Shelton, Hall and Hall, (406) 656-7500

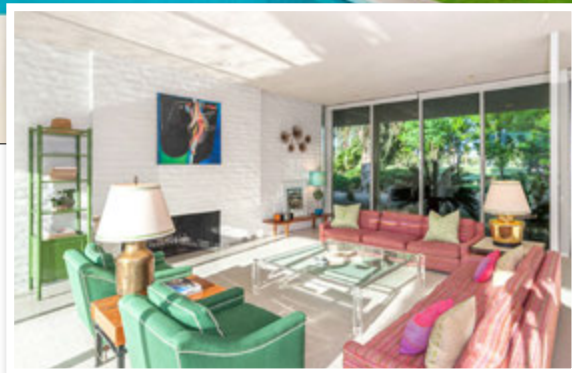
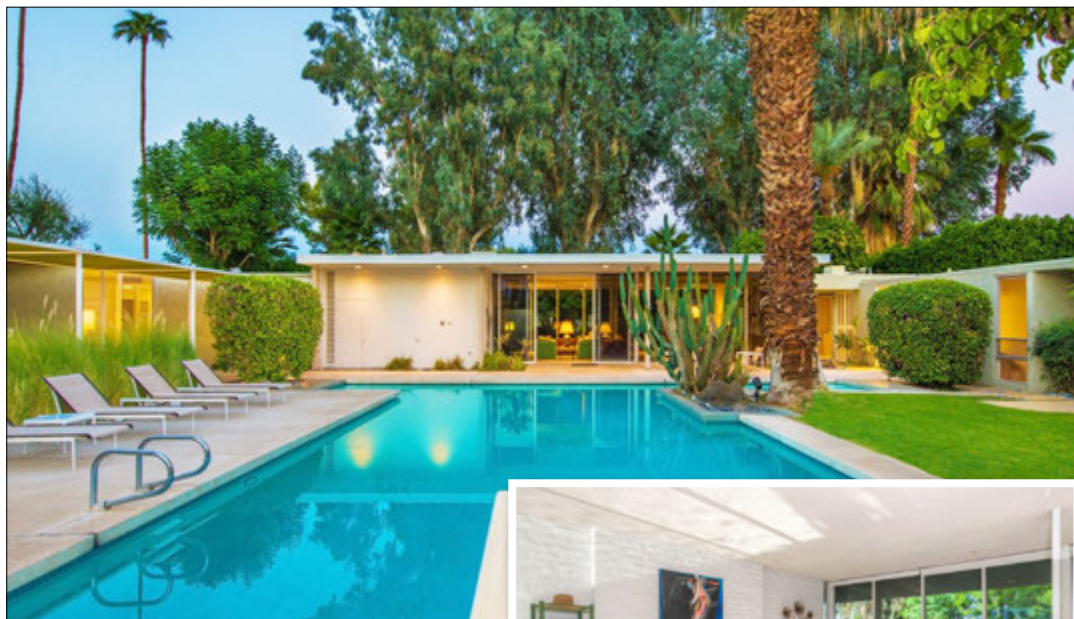
**3** ▶ **Deer Isle, Maine** Built in 1896, this six-bedroom house was featured in the Mel Gibson film *Man Without a Face*. The shingle-style cottage by architect William R. Emerson has multiple fireplaces, a sunroom, and west-facing views throughout the home. Set on 4 acres, the property has 600 feet of waterfront access, a deepwater dock, and a boathouse. \$2,595,000. Kim Swan, the Swan Agency/Sotheby's International Realty, (207) 288-5818





**4 ▶ Rancho Mirage, Calif.**

The Jaffe House was built in 1963 for a prominent doctor who purchased the land from Groucho Marx. Designated as a landmark, the stucco, steel, and glass home has four bedrooms and 11-foot ceilings. The property includes a patio area, a T-shaped pool, and a one-bedroom guesthouse that served as an office where Marx and other celebrities would receive treatment. \$1,995,000. Jimmy Wilson, Deasy/Penner and Partners, (626) 683-0777



**5 ▲ Fairfield, Conn.** Featured in the cult classic *The Stepford Wives*, this 1959 colonial-style home underwent renovations over the past 10 years. Interior details include French doors, a wet bar, heated bathroom floors, and a lower-level guest room. The 2.2-acre property lies within one of the highest-ranked school districts in the nation. \$1,475,000. Ellen Fusco, William Pitt/Sotheby's International Realty, (203) 255-6101



**6 ▲ New York City** Sharon Stone starred in the 1993 film *Sliver* at this duplex penthouse in Murray Hill. The two-bedroom condominium features a chef's kitchen, a bedroom with two bathrooms en suite, and wraparound windows with views of the skyline and the East River. Building amenities include a zen garden, a reflecting pool, and full-time staff. \$2,295,000. Daniel Critchett, Stribling, (646) 613-2743

